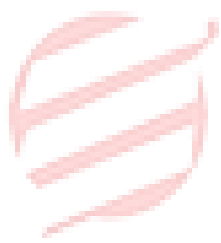


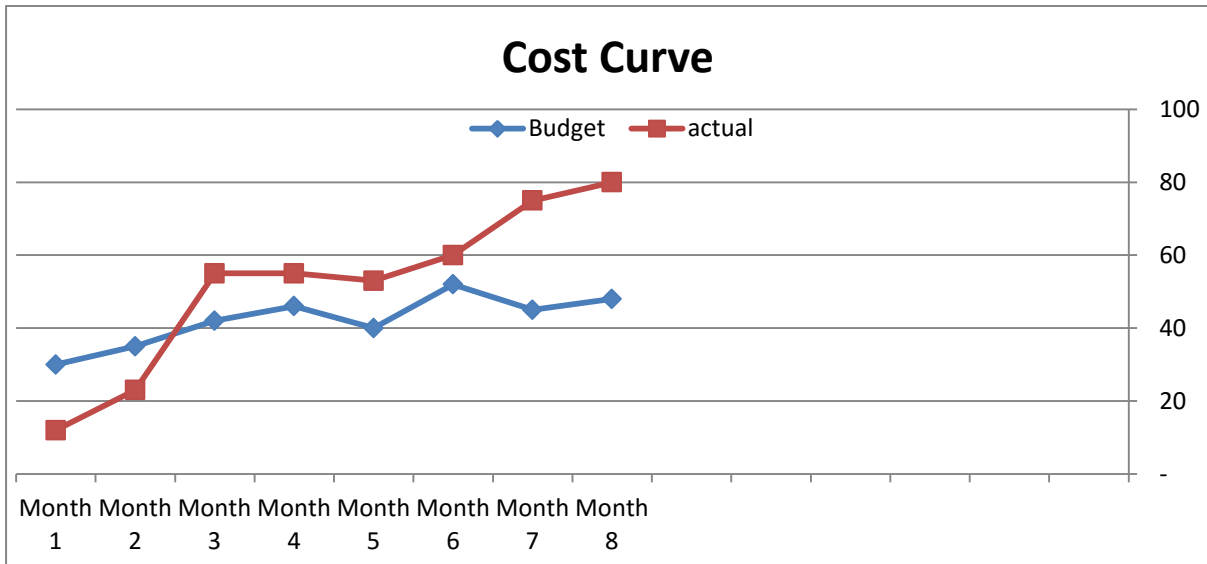
# MGT. 250

---



EssayCorp **5** years  
\*\*\*\*\*

1 Based on the available data, the cumulative cost curve is given here-

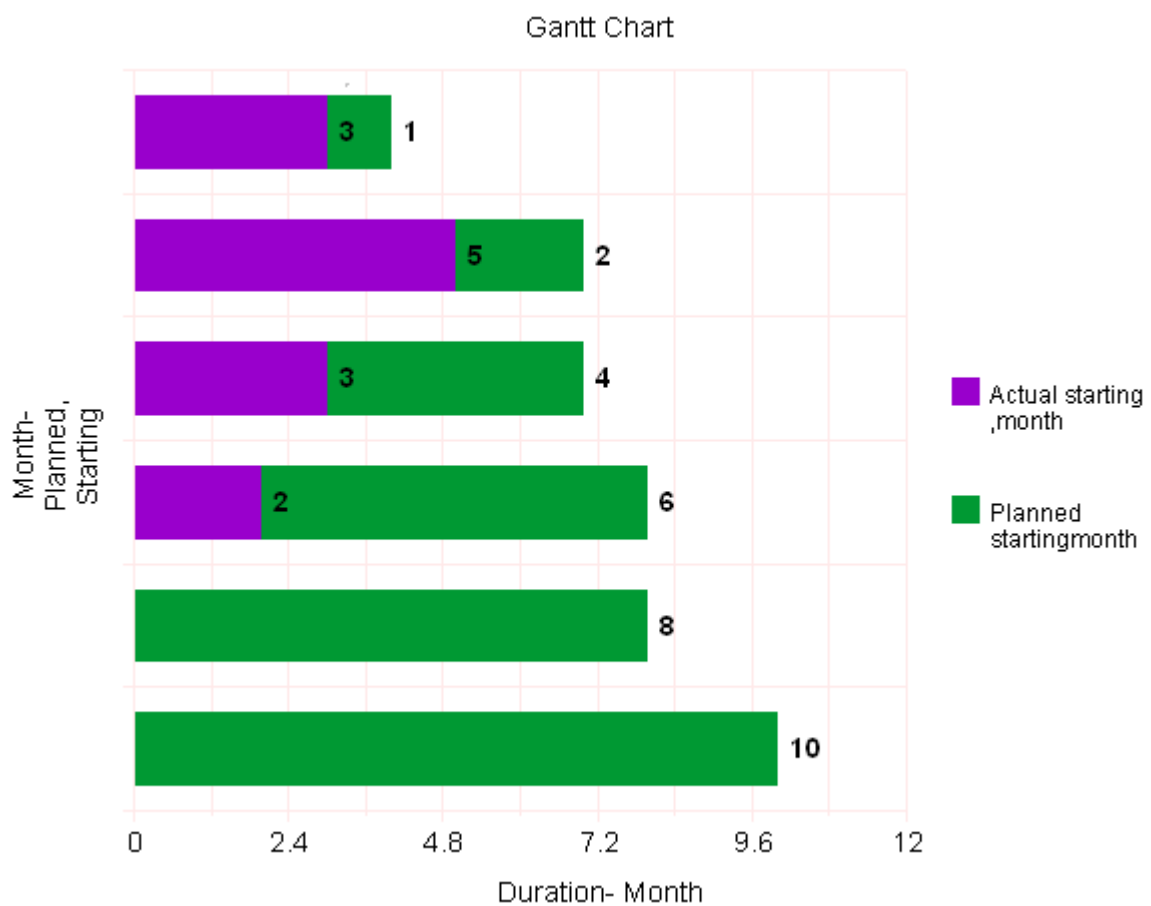


2 The table is given here, and the chart is drawn below-

**Project Schedule Data**

Task	Planned Starting Month	Planned Duration (months)	Actual starting month	Actual Duration (mths)
A	1	2	2	3
B	2	3	3	5
C	4	3	6	3 so far
D	6	5	7	2 so far
E	8	4	Not yet begun	
F	10	3	Not yet begun	

This Gantt chart explains the progression of this project. We can draw a few examples



3 Based on the available data, the following assumptions about the project can be drawn-

Until, the second month, the planned cost and actual cost of the project was very much under control. The actual costs are lower, than planned costs. From the third month on, the actual costs are rising, and there is a progressive increase in actual costs. This has also increased considerable over time. So, the costs of the project are rising at a steady level. The project shall overshoot its expenses.

As far as the scheduling is concerned, there is also an increase in time period of schedules. The actual month of start based on the milestone has been shifting. So, this means that the project has not been able to keep up with its timelines. So, its going to overshoot its deadline.



EssayCorp 5 years ★★★★★